



PUEBLO

AMTRAK STATION DESIGN + ENGINEERING

Pueblo, CO

CITY COUNCIL

02.06.23





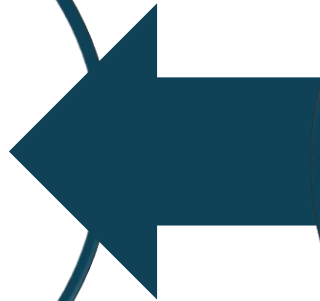
WELCOME!



PROJECT TEAM > MANAGEMENT



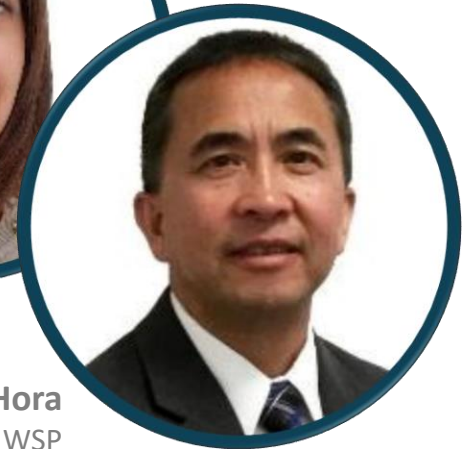
Mike Ricottone
Project Manager | Pueblo County



Bryan Robinson
Project Manager | WSP



Melanie Monarco
Deputy Project Manager | WSP



Myron Hora
Principal-in-Charge | WSP



AGENDA

- **Project Update**
- **10% Design Concept**
- **Question & Answer**
- **Next Steps**



PROJECT UPDATE



PROJECT UPDATE > WORK-TO-DATE

✓ We last met with you back in August 2022

- August 8, 2022 – Pueblo City Council Meeting
- August 9, 2022 – Board of County Commissioner’s Meeting

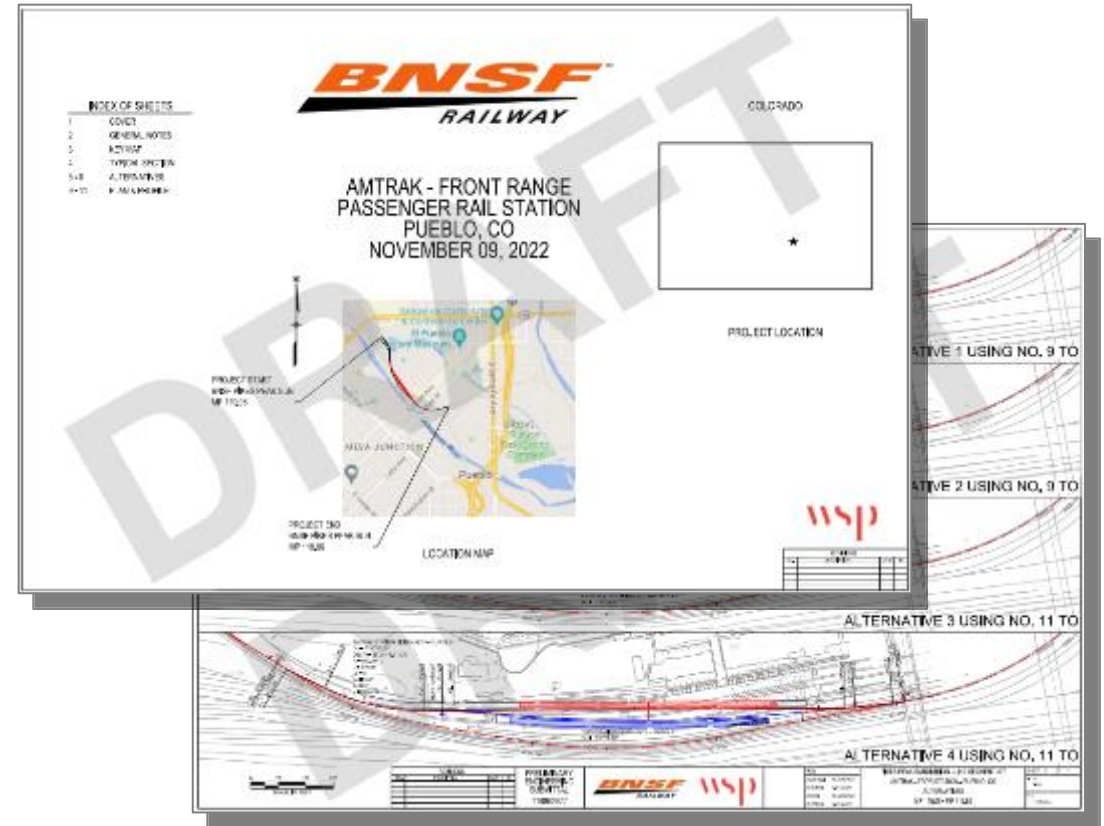
✓ Attending the Front Range Passenger Rail District Meetings

✓ On-going coordination with CDOT

- Relative to 2019 and 2020 CRISI Grants

✓ Prepared a 10% Rail & Platform Layout and coordinated with BNSF

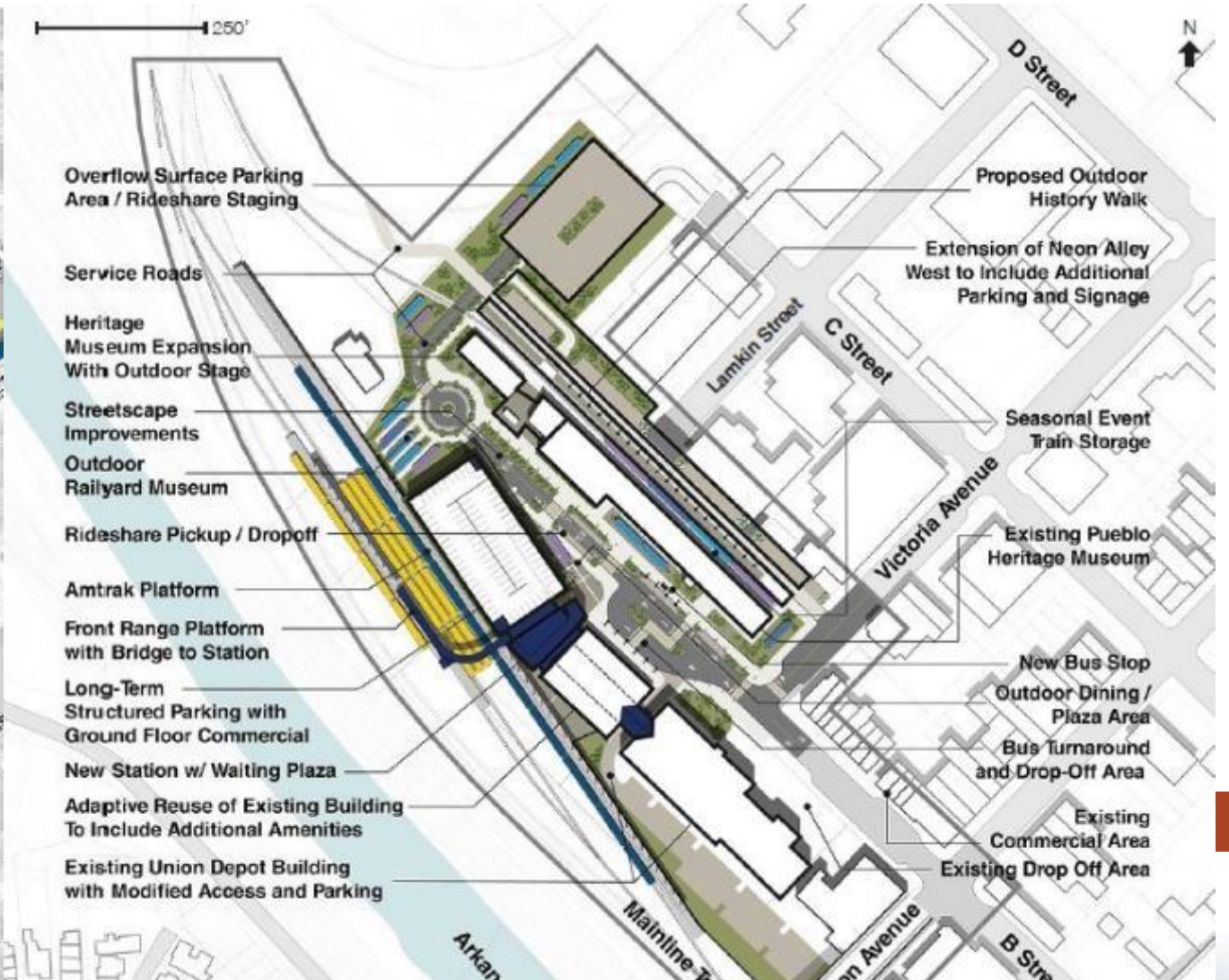
✓ Advanced “Option B” to 10% Design Documents



10% DESIGN CONCEPT



STATION AREA PLAN (2021)



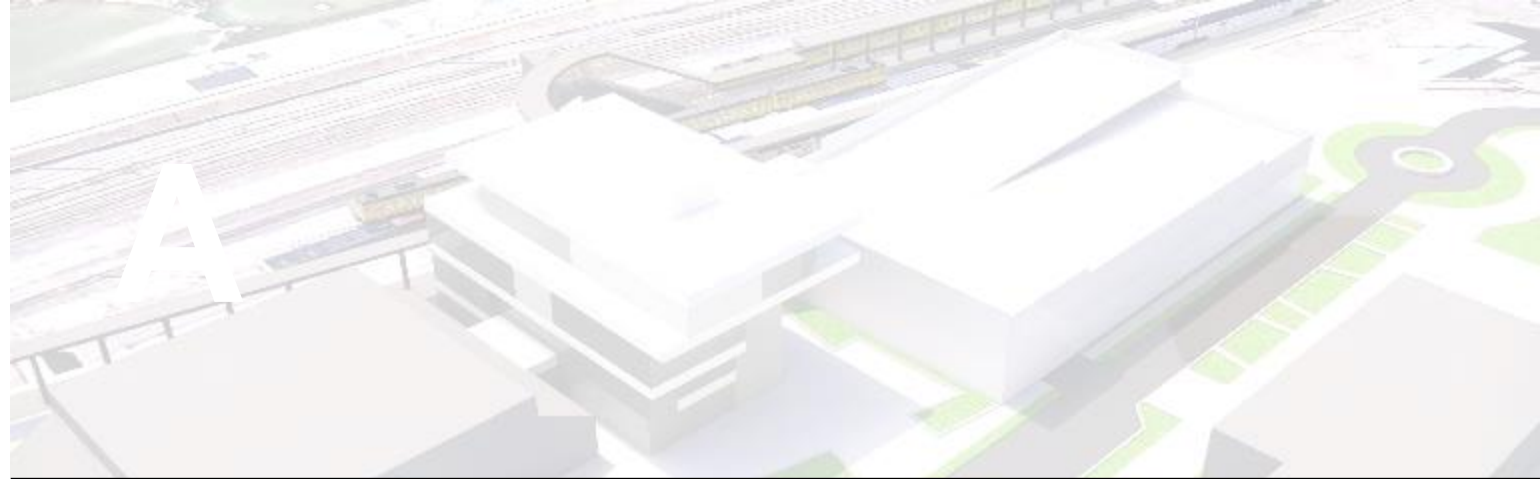
PREFERRED OPTION (2022)

- **ALL OPTIONS**

- Flexibility for independent station and garage development
- Expanded views of Pikes Peak and Front Range
- Direct ground-level access to Amtrak Platforms
- Space for community programming / exterior public plazas
- All range between 27-30K Square feet in size
- All maintain critical bridge connection to FRPR

- **OPTION B**

- Medium height station with most modest footprint
- Unique Station with expanded views with pedestrian bridge included as part of the station footprint
- Addresses parking needs for passenger rail and the district
- Optional connection between station and garage



PREFERRED OPTION (2022)



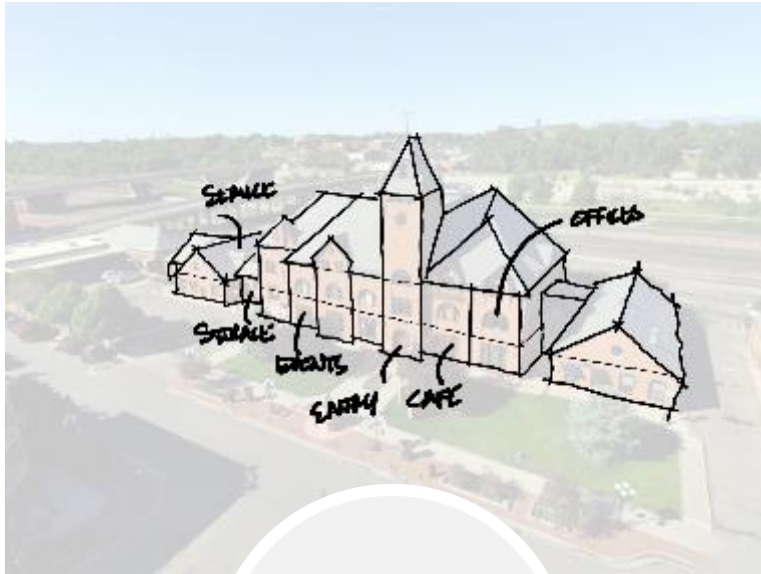
PREFERRED OPTION (2022)



PREFERRED OPTION (2023)

> 10% DESIGN CONCEPT

Massing + Programming



Materials + Fenestration



Architecture + Details



You
are
here!



10%

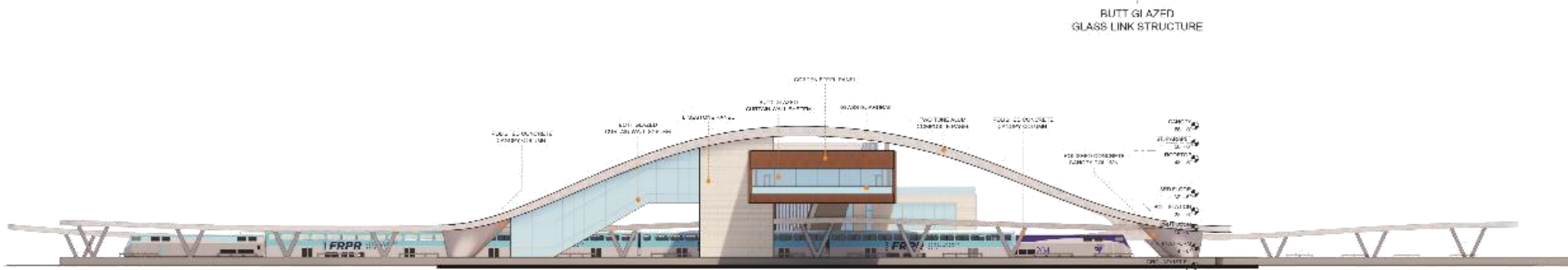
DESIGN CONCEPT



“WHERE THE RIVER MEETS THE RAILS.”



THE CONCEPT



THE CONCEPT

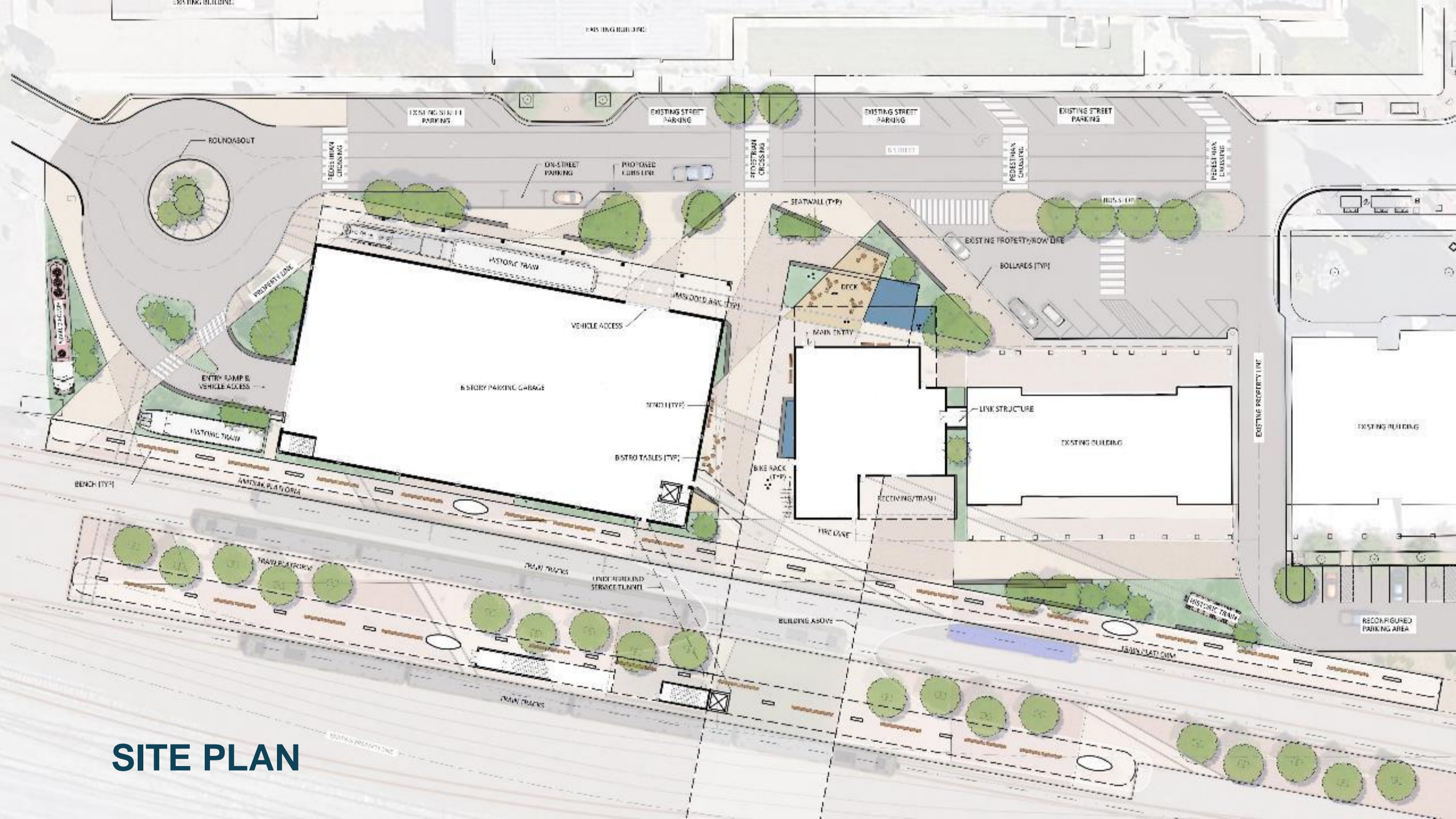


FROM ABOVE

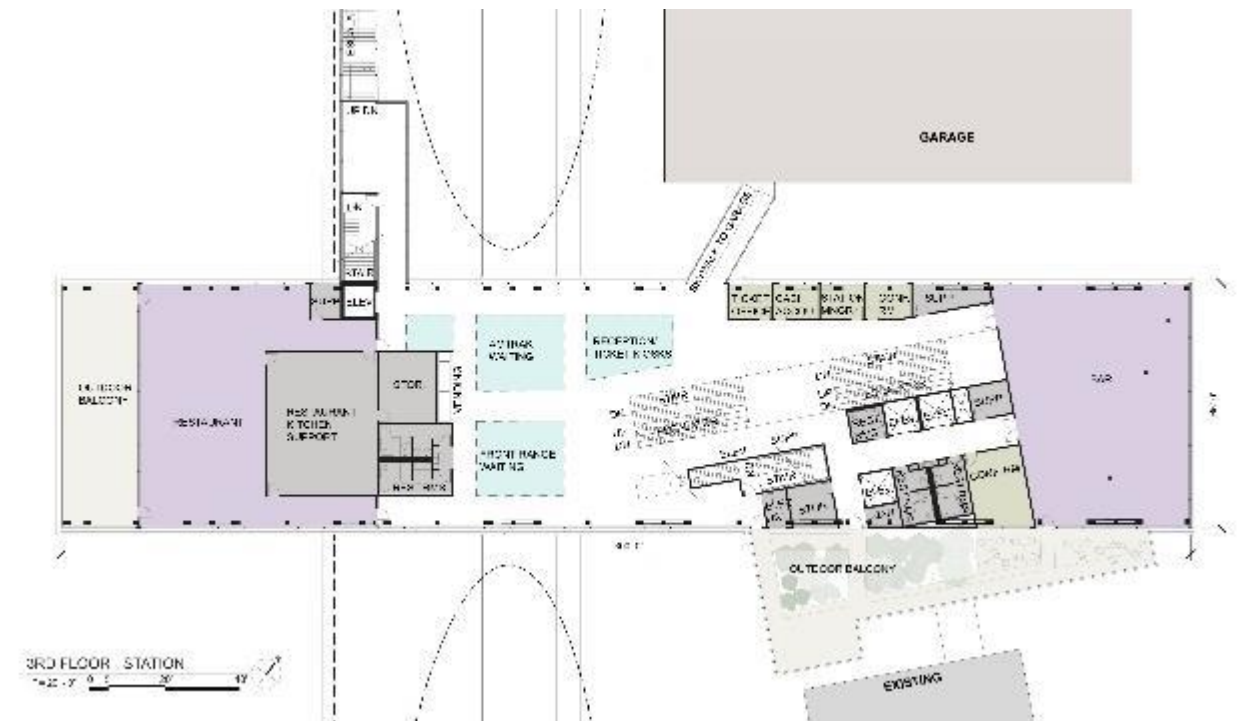
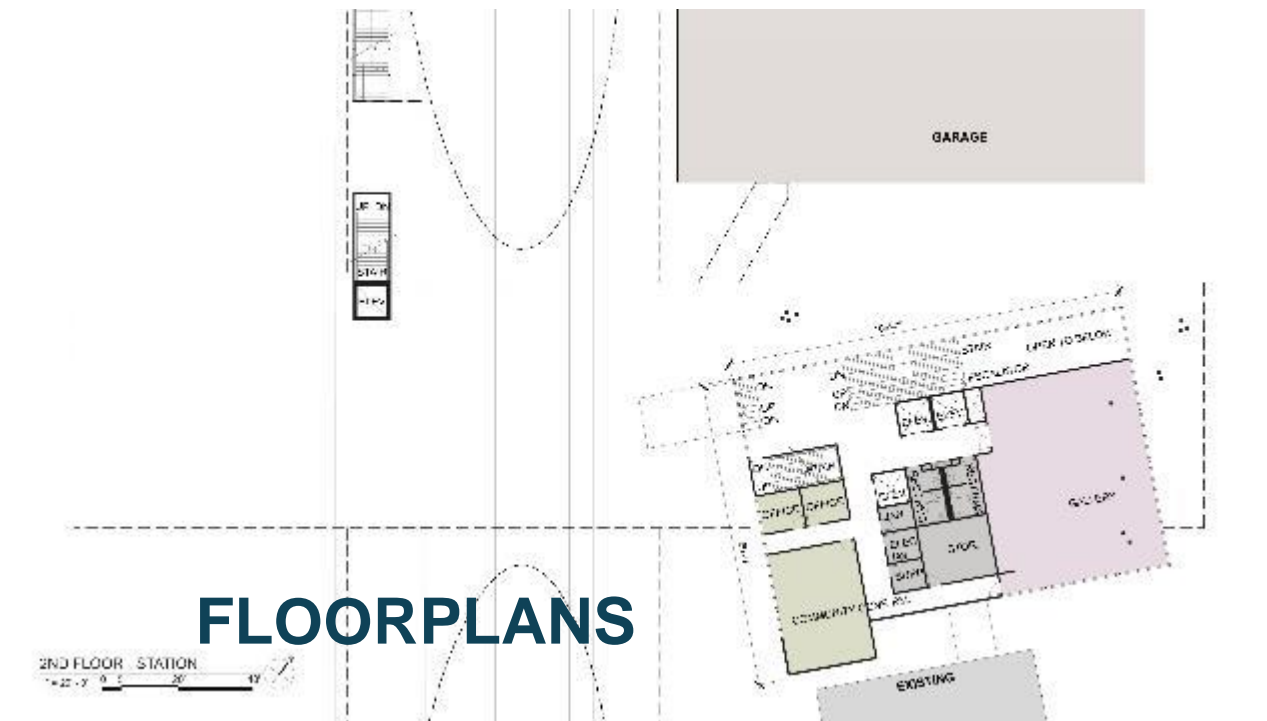
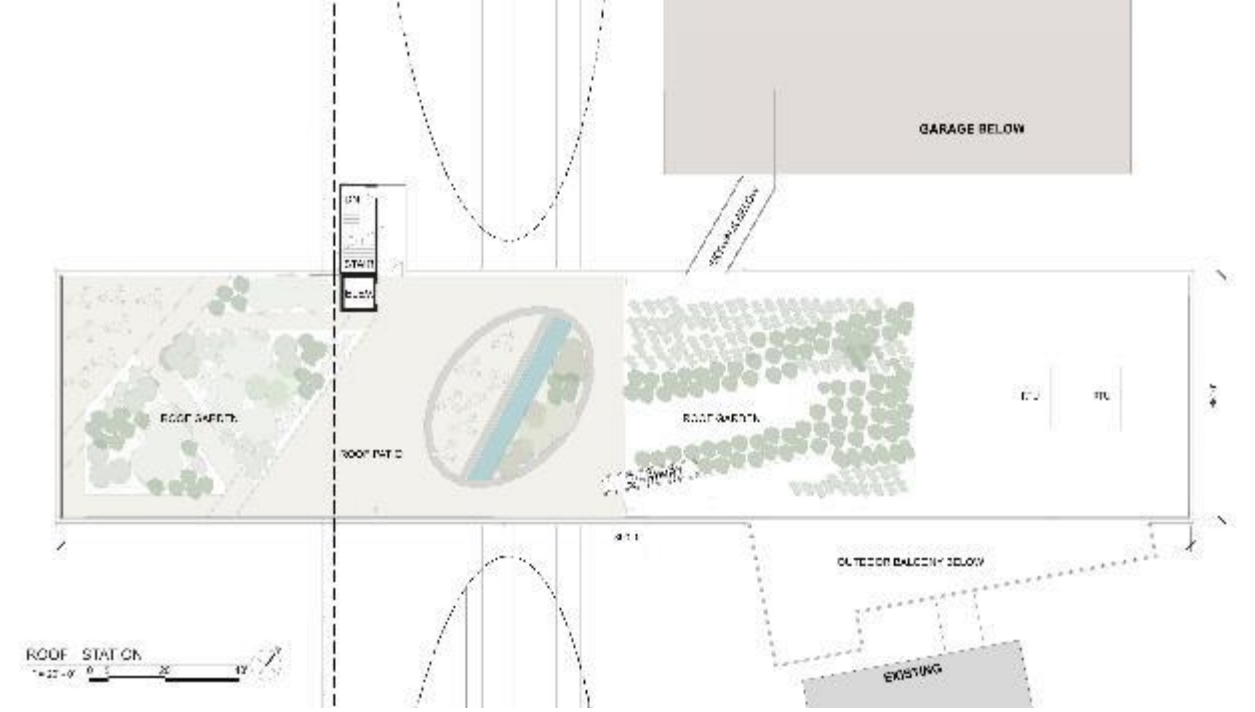
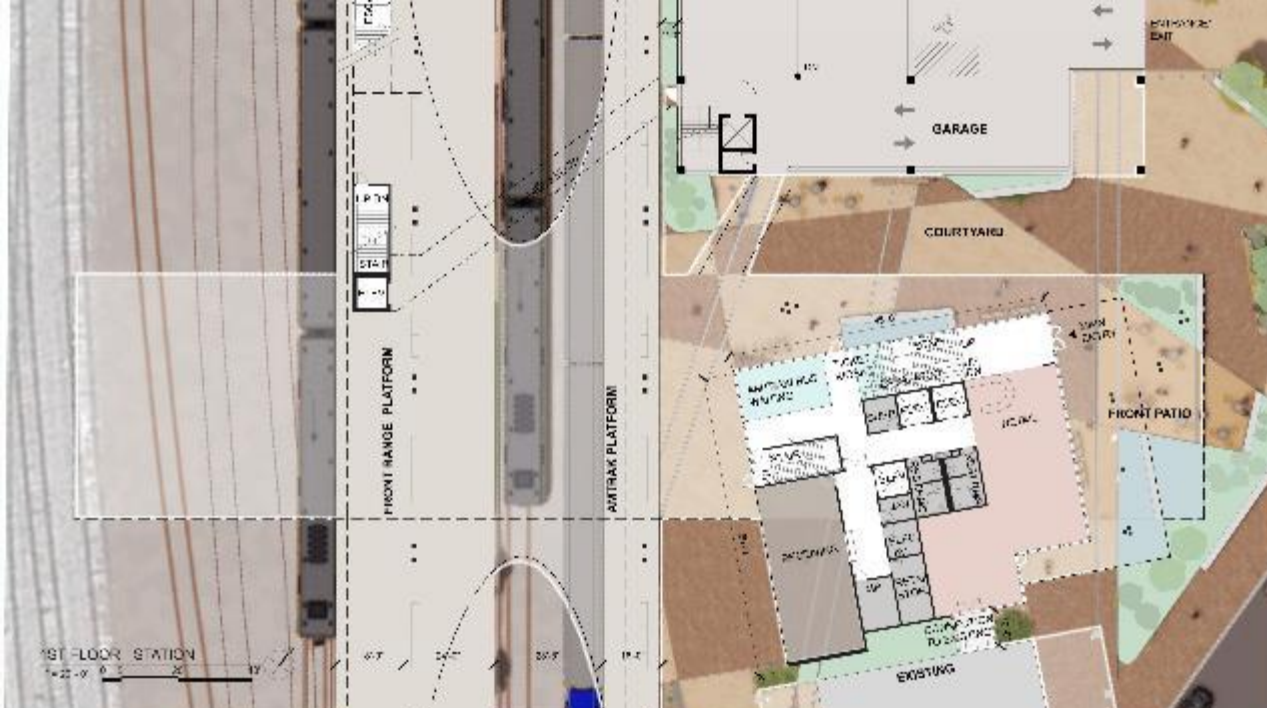




THE CONCEPT



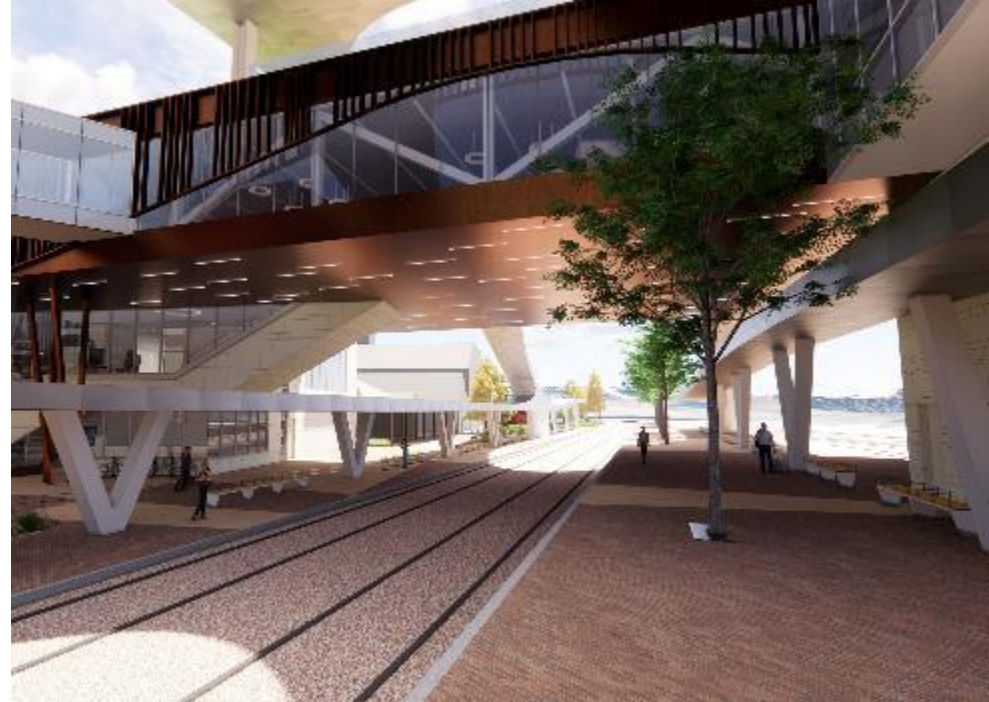
SITE PLAN



FLOORPLANS



PLATFORMS





PUBLIC SPACES





INTERIORS



DAY VIEW



NIGHT VIEW

QUESTION & ANSWER



An aerial photograph of a town, likely in the American West, featuring a prominent domed building, a parking lot with many cars, and a boat on a trailer. In the foreground, several sets of train tracks curve through the landscape. The text "NEXT STEPS!" is overlaid in a bold, dark blue font across the center of the image.

NEXT STEPS!



NEXT STEPS

- ✓ **Feedback from City Council**
- ✓ **Additional presentations to Other Stakeholder Groups**
- ✓ **Continued Coordination with CDOT and other Key Stakeholders**
- ✓ **Determine components for 30% Design Documents and Phasing**



THANK YOU!

